



---

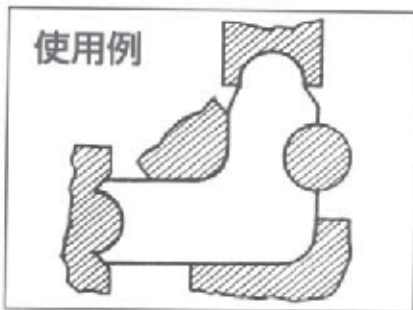
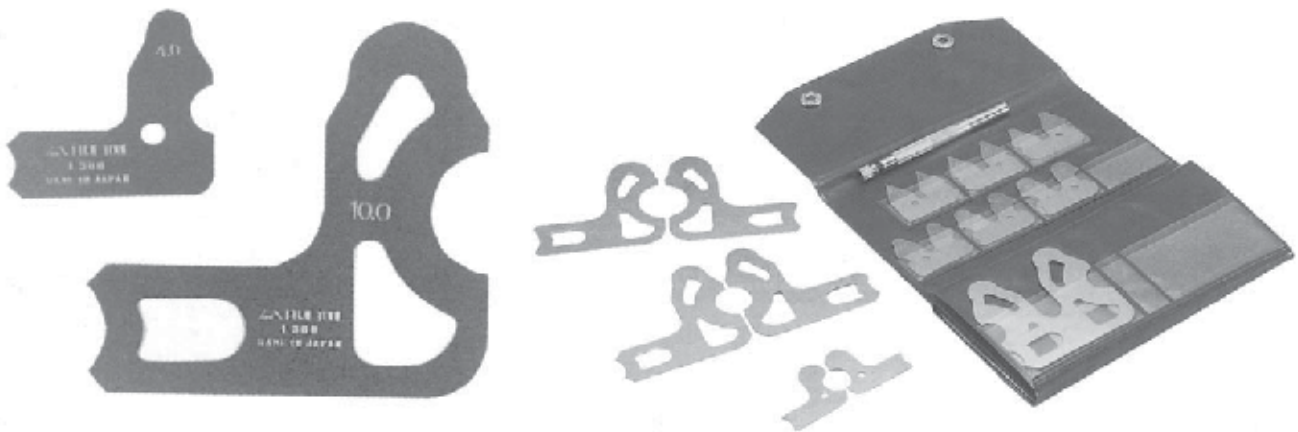
FOR MORE INFORMATION PLEASE VISIT OUR WEBSITE

[www.kvsengineer.com](http://www.kvsengineer.com)

(click the link to direct to the site)

02-214-0101

---

**เกจวัดรัศมี (R) (วัสดุเป็นสแตนเลส)****RADIUS GAUGE (STAINLESS STEEL)**

RADIUS GAUGE RANGING FROM 0.2-50 mm CAN BE USE FOR INSPECTION, LAYOUT, PATTERN MARKING AND OTHER MACHINE JOB, ALL TYPE MADE OF STAINLESS STEEL WITH SATIN-CHROME FINISHED.

CODE NO.	LEAVES	SIZE (METRIC)
L300 MA	14	0.5 1.0 1.5 2.0 2.5 3.0 3.5 4.0 4.5 5.0 5.5 6.0 6.5 7.0
L300 MB	12	7.5 8.0 8.5 9.0 9.5 10.0 10.5 11.0 11.5 12.0 12.5 13.0
L300 MC	8	13.5 14.0 14.5 15.0 15.5 16.0 16.5 17.0
L300 MD	8	17.5 18.0 18.5 19.0 19.5 20.0 20.5 21.0
L300 ME	8	21.5 22.0 22.5 23.0 23.5 24.0 24.5 25.0
L300 MF	10	25.5 26.0 26.5 27.0 27.5 28.0 28.5 29.0 29.5 30.0
L300 MG	8	31.0 32.0 33.0 34.0 35.0 36.0 37.0 38.0
L300 MH	12	39.0 40.0 41.0 42.0 43.0 44.0 45.0 46.0 47.0 48.0 49.0 50.0
L300 MX	26	L300 MA + L300 MB
L300 M2	19	0.2 0.3 0.4 0.5 0.6 0.7 0.8 0.9 1.0 1.1 1.2 1.3 1.4 1.5 1.6 1.7 1.8 1.9 2.0
L300 M4	20	2.1 2.2 2.3 2.4 2.5 2.6 2.7 2.8 2.9 3.0 3.1 3.2 3.3 3.4 3.5 3.6 3.7 3.8 3.9 4.0
L300 M6	20	4.1 4.2 4.3 4.4 4.5 4.6 4.7 4.8 4.9 5.0 5.1 5.2 5.3 5.4 5.5 5.6 5.7 5.8 5.9 6.0

Unit : mm

- MEASURING ACCURACY WITHIN 0.2~25.0 (±0.03 mm)  
25.5~50.0 (±0.05 mm)

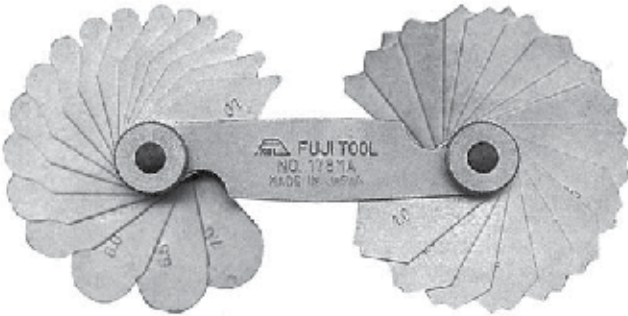


**เกจวัดรัศมี (R) (แบบพับเก็บได้)**

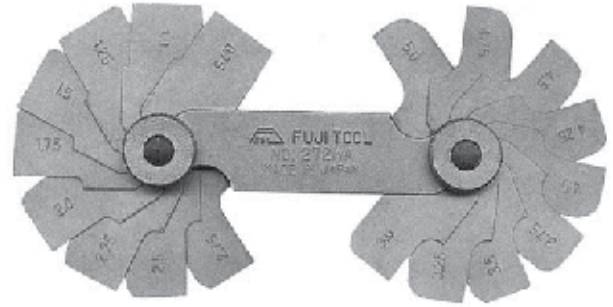
**RADIUS GAUGE**

THESE GAUGE ARE TO MEASURE THE CONVEX AND CONCAVE RADIUS OF WORKS.

TOOLMAKERS AND INSPECTORS CAN MEASURE THE RADIUS OF THE EDGES AND CORNER OF WORKS BOTH SIDE OF LEAVES ARE AVAILABLE.



**SERIES 178**



**SERIES 272**

**SERIES 178**

CODE NO.	LEAVES	SIZE (METRIC)
178HRMAA	18	0.2 0.3 0.4 0.5 0.6 0.7 0.8 0.9 1.0
178MAA	20	0.1 0.2 0.3 0.4 0.5 0.6 0.7 0.8 0.9 1.0
178-112	20	1.1 1.2 1.3 1.4 1.5 1.6 1.7 1.8 1.9 2.0
178-213	20	2.1 2.2 2.3 2.4 2.5 2.6 2.7 2.8 2.9 3.0
178HRMA	34	1.0 1.25 1.5 1.75 2.0 2.25 2.5 2.75 3.0 3.5 4.0 4.5 5.0 5.5 6.0 6.5 7.0
178MA	34	1.0 1.25 1.5 1.75 2.0 2.25 2.5 2.75 3.0 3.5 4.0 4.5 5.0 5.5 6.0 6.5 7.0
178HRMB	32	7.5 8.0 8.5 9.0 9.5 10.0 10.5 11.0 11.5 12.0 12.5 13.0 13.5 14.0 14.5 15.0
178MB	32	7.5 8.0 8.5 9.0 9.5 10.0 10.5 11.0 11.5 12.0 12.5 13.0 13.5 14.0 14.5 15.0
178MR	30	15.5 16.0 16.5 17.0 17.5 18.0 18.5 19.0 19.5 20.0 21.0 22.0 23.0 24.0 25.0
178MC	16	16.0 17.0 18.0 19.0 20.0 21.0 22.0 23.0
178MD	14	24.0 25.0 26.0 27.0 28.0 29.0 30.0
178ME	20	31.0 32.0 33.0 34.0 35.0 36.0 37.0 38.0 39.0 40.0
178MF	20	41.0 42.0 43.0 44.0 45.0 46.0 47.0 48.0 49.0 50.0

Unit : mm

**SERIES 272**

CODE NO.	LEAVES	SIZE (METRIC)
272MAA	10	0.1 0.2 0.3 0.4 0.5 0.6 0.7 0.8 0.9 1.0
272-112	10	1.1 1.2 1.3 1.4 1.5 1.6 1.7 1.8 1.9 2.0
272-213	10	2.1 2.2 2.3 2.4 2.5 2.6 2.7 2.8 2.9 3.0
272MA	18	0.75 1.0 1.25 1.5 1.75 2.0 2.25 2.5 2.75 3.0 3.25 3.5 3.75 4.0 4.25 4.5 4.75 5.0
272MB	16	5.5 6.0 6.5 7.0 7.5 8.0 8.5 9.0 9.5 10.0 10.5 11.0 11.5 12.0 12.5 13.0
272MC	10	13.0 14.0 15.0 16.0 17.0 18.0 19.0 20.0 21.0 22.0
272MD	8	23.0 24.0 25.0 26.0 27.0 28.0 29.0 30.0
272ME	10	31.0 32.0 33.0 34.0 35.0 36.0 37.0 38.0 39.0 40.0
272MF	10	41.0 42.0 43.0 44.0 45.0 46.0 47.0 48.0 49.0 50.0

Unit : mm

● MEASURING ACCURACY FOR 178,272 SERIES

- 0.1 ~ 3.0 (±0.03 mm)
- 3.25 ~ 30.0 (±0.05 mm)
- 31.0 ~ 50.0 (±0.08 mm)

● MEASURING ACCURACY FOR 178HRM..SERIES

- 0.2~1.0 (± 0.01mm)
- 1.25~15.0 (± 0.02 mm)

**เกจวัดเบอร์ลวด**
**WIRE GAUGE**


American Standard Wire Gauge for gaging non-ferrous wire and metal such as copper, brass, aluminium, etc.  
 U.S. Standard Sheet Metal Gauge for gauging uncoated sheet, plate iron and steel  
 B.W.G., B.S.W.G., S.W.G. in individual enveloped Metric-English demical equivalent

CODE NO.	SIZE
<b>BWG</b>	0~36
<b>SWG</b>	1~36
<b>BSWG</b>	0~36
<b>JIS</b>	0.1~12 mm

**เกจวัดขนาดดอกสว่าน**
**DRILL GAUGE**


Fractional size from 1/16" to 1/2" by 64ths. Total of 29 holes are marked with the drill size in fractions and decimals.  
 Approximate plate size is 6\*3/8" by 2\*1/2", thickness 5/64". This Drill Gauge is durable enough for lifetime service.

CODE NO.	SIZE
<b>D 1-6</b>	1.0~6.0 mm (step 0.1)
<b>D 1-13</b>	1.0~13.0 mm (step 0.5)
<b>D 6-13</b>	6.0~13.0 mm (step 0.1)
<b>INCH</b>	1/16~1/2 (step 64)

**เกจวัดเกลียว (วัสดุเป็นสแตนเลส)**
**SCREW PITCH GAUGE (STAINLESS STEEL)**

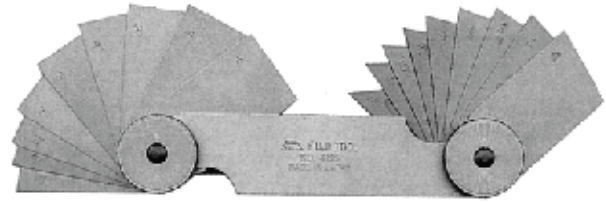

CODE NO.	LEAVES	PITCH	SIZE (INCH & MM)
<b>169</b>	52	55°	4 4 1/2 5 6 7 8 9 10 11 12 13 14 16 18 19 20 22 24 25 26 28 30 32 36 40 48 60 62
		60°	0.25 0.3 0.35 0.4 0.45 0.5 0.6 0.7 0.75 0.8 0.9 1.0 1.25 1.5 1.75 2.0 2.5 3.0 3.5 4.0 4.5 5.0 5.5 6.0



เกจวัดมุม

ANGLE GAUGE

CODE NO.	LEAVES	SIZE
466	18	1° 2° 3° 4° 5° 7° 8°
		9° 10° 12° 14° 14-1/2°
		15° 20° 25° 30° 35° 45°



หางปลาวัดองศา

CENTER GAUGE

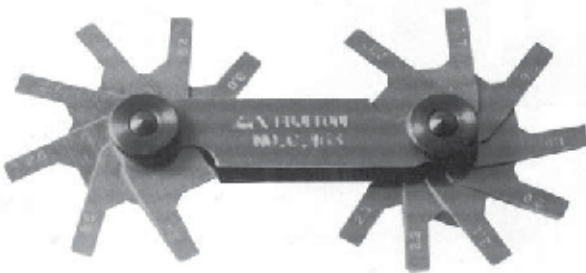


MEASURING ACCURACY WITHIN ( $\pm 10'$ )

CODE NO.	TYPE	TYPE	MARKED
651	55°	INCH	1/14 1/20 1/24 1/32 INCH
652	60°	METRIC	1 1/2 mm

เกจวัดมุมแซมเฟอร์ (วัสดุเป็นสแตนเลส)

CHAMFER MEASURING GAUGE (STAINLESS STEEL)



These gauges permit simple, rapid, and accurate measuring of chamfers, providing improved operational efficiency.

Five sets are available which can measure chamfers from .2 to 10mm.

Being designed for compactness, these gauges can be used efficiently and conveniently on site.

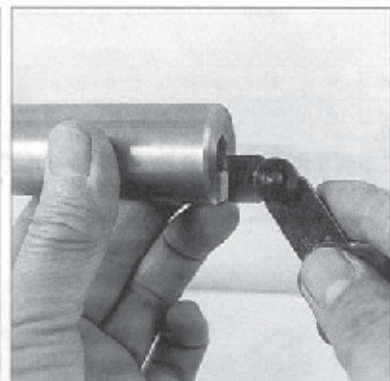
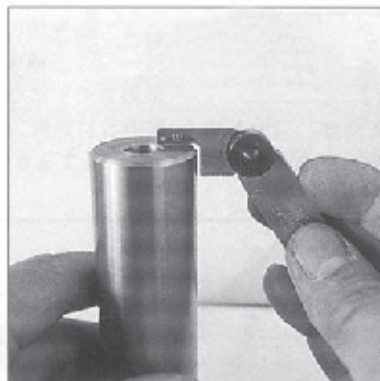
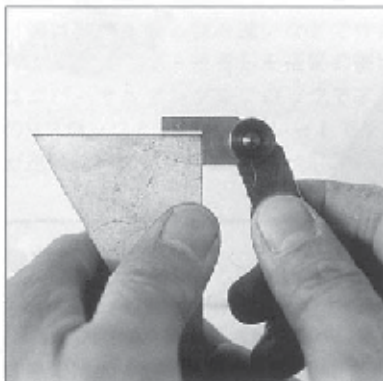
Accuracy :  $\pm 0.1$  mm

Material : Stainless steel

Thickness : 0.6 mm

Unit : mm.

CODE NO.	LEAVES	SIZE (METRIC)
C-215	14	0.2 0.3 0.4 0.5 0.6 0.7 0.8 0.9 1.0 1.1 1.2 1.3 1.4 1.5
C-163	15	1.6 1.7 1.8 1.9 2.0 2.1 2.2 2.3 2.4 2.5 2.6 2.7 2.8 2.9 3.0
C-5	10	0.5 1.0 1.5 2.0 2.5 3.0 3.5 4.0 4.5 5.0
C-10	10	5.5 6.0 6.5 7.0 7.5 8.0 8.5 9.0 9.5 10.0



## เกจวัดมุมเอ็คมี่ (วัสดุเป็นสแตนเลส)

### ACME SCREW PITCH GAUGE (STAINLESS STEEL)



- MATERIAL : Stainless Steel
- THICKNESS : 0.8mm
- ACCURACY : ±0.02~0.05mm

There was no gauges or instruments, so far, to simply using for measurement of acme screw thread. Now, our original newly designed item, we developed and completed our "ACME SCREW PITCH GAUGE". For basic acme scw thread of 29° (INCH) and 30° METRIC, we put together in one holder 16 leaves for 29° and 12 leaves for 30° with coth of 90mm long leaf, in the range of 30-45mm on gear tooth.

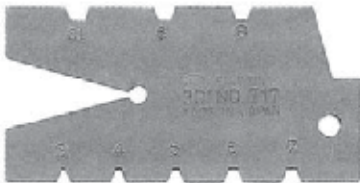
It is very easy to use and all gauges is linked on one side and made from no rust of stainless steel.  
 "USE IT FOR MEASURING ACME SCREW THREAD!!"

CODE NO.	LEAVES	TYPE	SIZE (METRIC)			
			2 3	4 5 6 7	8 9 10 12 16	20
30-720	12	30°				
		ACCURACY	±0.02	±0.03	±0.04	±0.05

CODE NO.	LEAVES	TYPE	SIZE (Inch)									
			1	1-1/3 1-1/2 1-3/4 2	2-1/2 3	3-1/2 4 5 6 7 8	9 10 12					
29-730	16	29°										
		ACCURACY	±0.05	±0.04	±0.04	±0.03	±0.02					

## เกจวัดมุมเอ็คมี่

### ACME SCREW THREAD GAUGE



CODE NO.	TYPE	SIZE
716	29°	INCH 1 1-1/3 1-1/2 1-3/4 2 2-1/2
		3 4 5 6 7 8 9 10
717	30°	METRIC 3 4 5 6 7 8 9 10

## เกจวัดฟันเฟือง

### GEAR TOOTH GAUGE

With this involute gear tooth gauge, it is easy to determine diametral pitch of involute gears from 6-80 and 2-5 in Inch and 0.5-5 and 6-12 in metric.

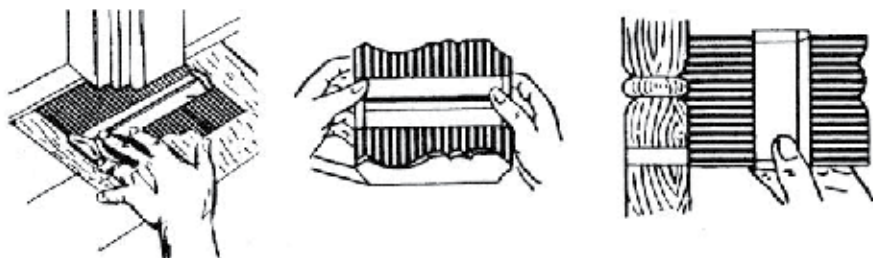


CODE NO.	LEAVES	TYPE	SIZE (mm)
MP-S14	13	14°	0.5 0.75 1.0 1.25 1.5 1.75 2.0 2.25 2.5 2.75 3.0 3.25 3.5 3.75
MP-S20	13	20°	4.0 4.5 5.0
MP-L14	7	14°	6.0 7.0 8.0 9.0 10.0 11.0 12.0
MP-L20	7	20°	

CODE NO.	LEAVES	TYPE	SIZE (Inch)
DP-S14	14	14°	6 7 8 9 10 11 12 14 16 18 20 22 24 26 28 30 32 36 40 48 64 80
DP-S20	8	20°	6 7 8 9 10 11 12 14 16 18
DP-L14	7	14°	2 2-1/2 3 3-1/2 4 4-1/2 5
DP-L20	7	20°	

## คอนทัวร์เกจ

### CONTOUR GAUGE



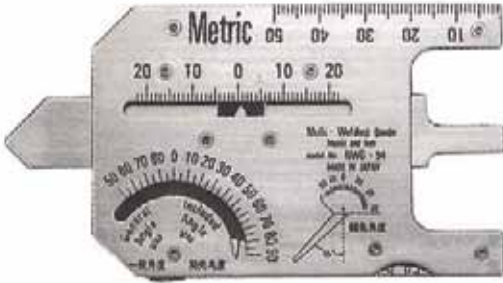
CODE NO.	LENGHT x WIDTH x PIN DIA.
150-6	150 x 85 x φ 0.9 mm
300-12	300 x 150 x φ 1.0 mm



## เกจวัดแนวเชื่อม รุ่น **NWG-94** (วัสดุเป็นสแตนเลส)

### **MULTI-WELDING GAUGE METRIC TYPE NWG-94 (STAINLESS STEEL)**

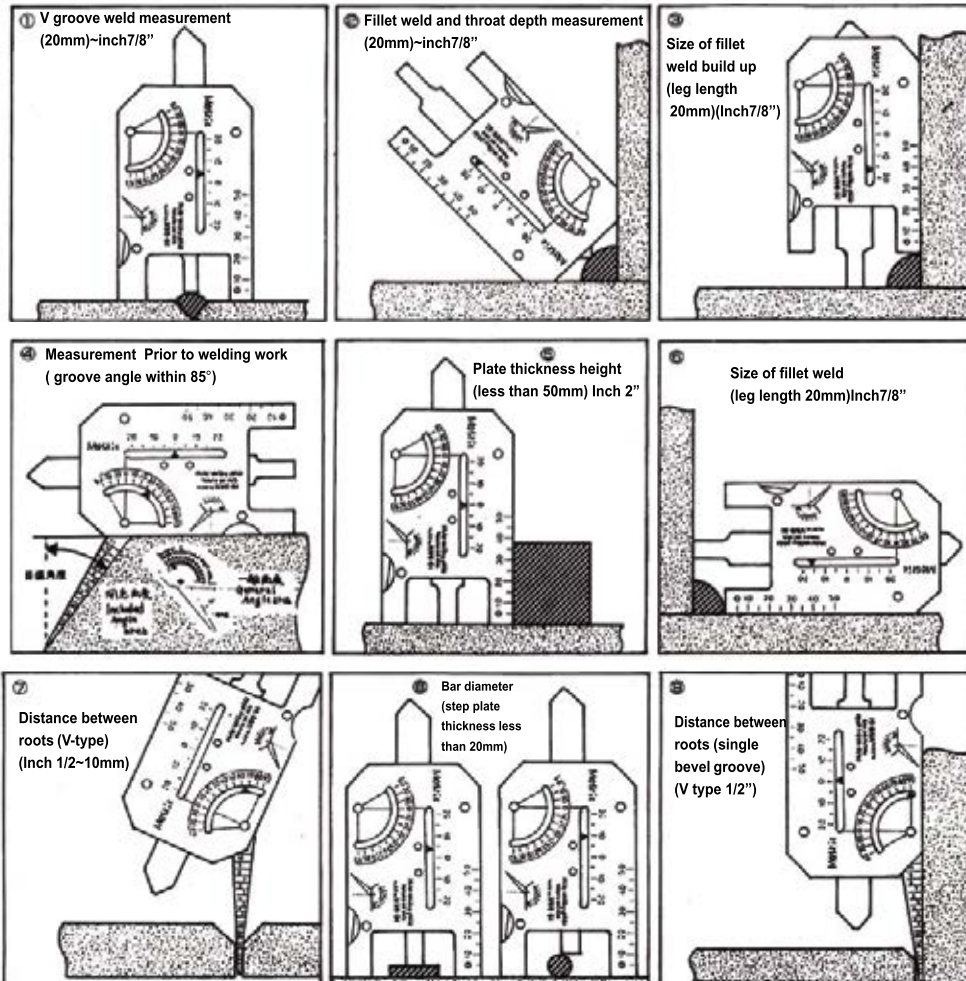
- Measuring gauge for weld bead
- Application : Measurement of bead build-up during welding works in general welding, construction, ship and bridge building, steel frame fabrication etc



#### ■ Specification

Material .....	Stainless steel
Dimension of the gauge .....	3.5 x 60 x 90 MM
Scale of the gauge .....	50 MM
Accuracy of measurement .....	± 0.2 MM
Angle of bevel groove .....	0~85° (step 5°)
.....	General Angle 0~50° (5°)
V-Groove weld measurement .....	} 20 MM
Fillet weld and throat depth measurement .....	
Root distance gap hole diameter .....	
Scale .....	1 x 6 x 110 MM
Weight of the gauge .....	80 g

#### ■ Measuring method (Use the gauge as shown below :)



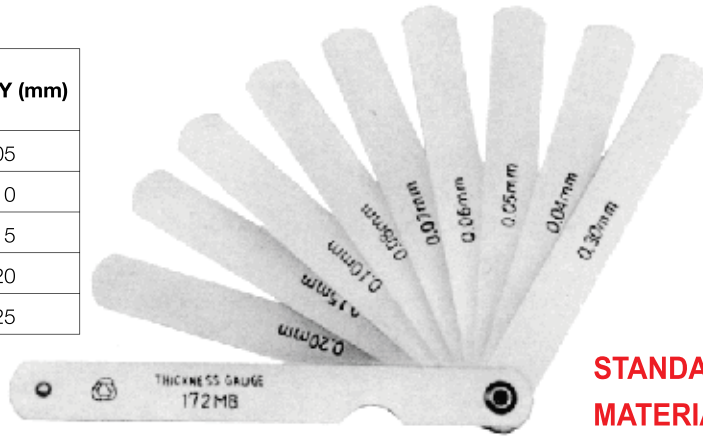


ฟิลเลอร์เกจ

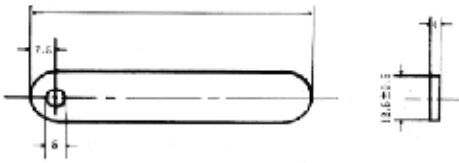
FEELER GAUGES

■ Specification of Leaf

SIZE (mm)		ACCURACY (mm)
INCLUDE	UNDER	
0.01	0.06	± 0.005
0.06	0.10	± 0.010
0.10	0.35	± 0.015
0.35	0.65	± 0.020
0.65	3.00	± 0.025



■ DIMENSION OF LEAF (mm)



**STANDARD MODEL**

**MATERIAL : SK 2 ~ 5**

**HARDNESS : Hv 400**

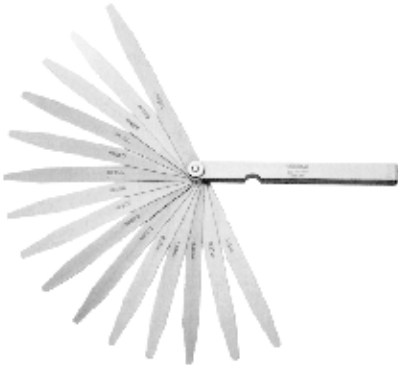
**STAINLESS STEEL MODEL**

**MATERIAL : SUS 304**

CODE NO. (STEEL)	CODE NO. (STAINLESS STEEL)	ความยาว LENGTH	จำนวนใบ/ชุด NO. OF LEAVES	ขนาด LEAF SIZES
172MB	172 MB (SUS)	100mm	9 ใบ	0.04 0.05 0.06 0.07 0.08 0.10 0.15 0.20 0.30 mm
172MC	172 MC (SUS)	150mm		
172MD	172 MD (SUS)	230mm		
172ME	172 ME (SUS)	300mm	10 ใบ	0.03 0.04 0.05 0.08 0.10 0.15 0.20 0.25 0.30 0.40mm
100MR	100 MR (SUS)	100mm		
150MR	150 MR (SUS)	150mm	10 ใบ	0.10 0.20 0.30 0.40 0.50 0.60 0.70 0.80 0.90 1.0mm
100MH	100 MH (SUS)	100mm		
150MH	150 MH (SUS)	150 mm	10 ใบ	0.01 0.02 0.03 0.04 0.05 0.06 0.07 0.08 0.09 0.10 mm
100MK	100 MK (SUS)	100mm		
150MK	150 MK (SUS)	150mm	19 ใบ	0.03 0.04 0.05 0.06 0.07 0.08 0.09 0.10 0.15 0.20 0.25 0.30 0.35 0.40 0.45 0.50 0.70 0.80 1.0mm
100MY	100 MY (SUS)	100mm		
150MY	150 MY (SUS)	150mm	25 ใบ	0.03 0.04 0.05 0.06 0.07 0.08 0.09 0.10 0.11 0.12 0.13 0.14 0.15 0.20 0.25 0.30 0.35 0.40 0.45 0.50 0.60 0.70 0.80 0.90 1.0 mm
100MZ	100 MZ (SUS)	100mm		
150MZ	150 MZ (SUS)	150mm	13 ใบ	0.03 0.04 0.05 0.06 0.07 0.08 0.10 0.15 0.20 0.30 1.0 2.0 3.0 mm
100MX	100 MX (SUS)	100mm		
150MX	150 MX (SUS)	150mm	13 ใบ	0.04 0.05 0.06 0.07 0.08 0.10 0.15 0.20 0.30 1.0 2.0 3.0 5.0 mm
467M	467 M (SUS)	115mm		
100MT	100 MT (SUS)	100mm	12 ใบ	0.04 0.05 0.06 0.07 0.08 0.10 0.15 0.20 0.30 1.0 2.0 3.0 mm
150MT	150 MT (SUS)	150mm		
100ML	100 ML (SUS)	100mm	19 ใบ	0.01 0.02 0.03 0.04 0.05 0.06 0.07 0.08 0.09 0.10 0.20 0.30 0.40 0.50 0.60 0.70 0.80 0.90 1.0 mm
150ML	150 ML (SUS)	150mm		
172B	172 B (SUS)	4inch	9 ใบ	.0015 .002 .003 .004 .006 .008 .010 .012 .015 inch
172C	172 C (SUS)	6inch		

ฟิลเลอร์เกจ

FEELER GAUGES (JIS B 7524-1992)



**STANDARD MODEL**

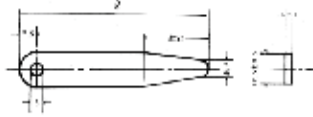
**MATERIAL : SK 2 ~ 5**

**HARDNESS : Hv 400**

**STAINLESS STEEL MODEL**

**MATERIAL : SUS 304**

■ DIMENSION OF LEAF (mm)



■ Specification of Leaf

Size (mm)		Accuracy (mm)
Include	Under	
0.01	0.06	± 0.003
0.06	0.10	± 0.004
0.10	0.35	± 0.005
0.35	0.65	± 0.008
0.65	3.00	± 0.010

CODE NO. (STEEL)	CODE NO. (STAINLESS STEEL)	ความยาว LENGTH	จำนวนใบ/ชุด LEAVES	ขนาด LEAF SIZES
100B10	100B10 (SUS)	100mm	10 ใบ	0.03 0.04 0.05 0.06 0.07 0.08 0.10 0.15 0.20 0.30mm
150B10	150B10 (SUS)	150mm		
200B10	200B10 (SUS)	200mm		
300B10	300B10 (SUS)	300mm	12 ใบ	0.01 0.02 0.03 0.04 0.05 0.06 0.07 0.08 0.09 0.10 0.20 0.30mm
100B12	100B12 (SUS)	100mm		
150B12	150B12 (SUS)	150mm	13 ใบ	0.03 0.04 0.05 0.06 0.07 0.08 0.10 0.15 0.20 0.30 1.0 2.0 3.0 mm
100B13	100B13 (SUS)	100mm		
150B13	150B13 (SUS)	150mm	19 ใบ	0.03 0.04 0.05 0.06 0.07 0.08 0.09 0.10 0.15 0.20 0.25 0.30 0.35 0.40 0.45 0.50 0.70 0.80 1.0mm
100B19	100B19 (SUS)	100mm		
150B19	150B19 (SUS)	150mm	25 ใบ	0.03 0.04 0.05 0.06 0.07 0.08 0.09 0.10 0.11 0.12 0.13 0.14 0.15 0.20 0.25 0.30 0.35 0.40 0.45 0.50 0.60 0.70 0.80 0.90 1.0 mm
100B25	100B25 (SUS)	100mm		
150B25	150B25 (SUS)	150mm		

ฟิลเลอร์เกจแบบเส้นแบน

FEELER STOCK GAUGES



LINER

FEELER STOCK GAUGES Material : SK Steel

Size (mm)	Width (mm)	Length
0.005	12.7	1M,3M 5M
0.015		
0.025		
0.035		
0.045		
0.01~0.50 (0.01 Increment)		
0.60~3.00 (0.10 Increment)		

Material : SK Steel		
Size (mm)	Width (mm)	Length
0.02~0.10 (0.01 Increment)	100	1M
0.15~1.00 (0.05 Increment)		
1.20~1.60 (0.10 Increment)		
2.00	150	
0.10~0.60 (0.10 Increment)		
0.80		
1.00	200	
0.10~0.60 (0.10 Increment)		
0.80		
1.00		

Material : Stainless Steel SUS 304		
Size (mm)	Width (mm)	Length
0.01	100	1M
0.02~0.08 (0.01 Increment)	300	
0.10~0.50 (0.05 Increment)	300	
0.60	150,300	
0.80		
1.00		
1.20		
1.50		