



---

FOR MORE INFORMATION PLEASE VISIT OUR WEBSITE

[www.kvsengineer.com](http://www.kvsengineer.com)

(click the link to direct to the site)

02-214-0101

---

## LEVELS

### ระดับน้ำอลูมิเนียมแบบระดับน้ำคู่

#### HEAVY DUTY DUAL-VIAL ALUMINUM LEVELS



#### 4600 SERIES

**Construction :** Large heavy-duty extruded aluminum I-beam frame. Hi-visibility bright red anodized finish. Independently calibrated dual-curved yellow vials per sight with protective Lexan \* lenses. Shock -protecting end caps. Frame dimension: 1.1/16" x 2.1/2"

**Applications :** Heavy-duty construction, buiding, remodeling where durability is a factor an ideal level where longer lengths are needed.

Catalog Number	Length	Total Vial Count	Level Vial Count	Plumb Vial Count
4624	24"	6	2	4
4648	48"	6	2	4
4672	72"	10	4	6
4696	96"	10	4	6

### ระดับน้ำอลูมิเนียมฐานแม่เหล็กมีฝาปิดหัวท้าย

#### MAGNETIC MACHINED TOP-READ ALUMINUM LEVELS



#### 3800 SERIES

**Construction :** Extruded aluminum I-beam frame with black anodized finish. Computer machined level edges. Strong, full-length magnetic strip. 360 degree reading acrylic yellow barrel vials. Screw on high impact plastic covers with protective lenses. Large, patented, magnified top-read window. Shock-protecting end caps. Frame dimension : 1" x 2.1/4"

**Applications :** the top-of-the-line barrel vial aluminium level for more accurate applications in level and plumb. Hands-free leveling on ferrous materials.

Catalog Number	Length	Total Vial Count	Level Vial Count	Plumb Vial Count
3818	18"	3	1	2
3824	24"	3	1	2
3836	36"	3	1	2
3848	48"	3	1	2
3872	72"	5	2	3
3878	78"	5	2	3
3896	96"	5	2	3

### ระดับน้ำอลูมิเนียมมีสเกลนิ้ว-มิล

#### TOP-READ ALUMINUM LEVELS WITH RULE



#### 1300 SERIES

**Construction :** Extruded aluminum midsize frame with clear (Silver) anodized finish. Rule edge in 1/8 ths, 1/16 ths and cm. 360 degree reading acrylic yellow barrel vials with Quick-Change one-piece replaceable high impact plastic covers and lenses. Top-reading windows available on 1300 series. Shock-protecting end caps. Frame dimension : 1" x 2.1/8"

**Applications :** A mid-range do-it-yourself level for general around-the-house projects, and light construction uses.

Catalog Number	Length	Total Vial Count	Level Vial Count	Plumb Vial Count	Graduations
1318*	18"	3	1	2	1/8", 1/16", cm.
1324	24"	3	1	2	1/8", 1/16", cm.
1328*	28"	3	1	2	1/8", 1/16", cm.
1336	36"	3	1	2	1/8", 1/16", cm.
1348	48"	3	1	2	1/8", 1/16", cm.
1472	72"	4	2	2	(no rule)

\* ยกเลิกการผลิต DISCONTINUED ITEM

# LEVELS

## ระดับน้ำอลูมิเนียมฐานแม่เหล็กมีฝาปิดหัวท้าย

### MAGNETIC TOP-READ ALUMINUM LEVELS



1700 SERIES

**Construction :** Extruded aluminum midsize frame with clear (Silver) anodized finish. Strong, full-length magnetic strip. 360 degree reading acrylic yellow barrel vials with Quick-Change® one-piece replaceable high impact plastic covers and lenses. Top-reading window. Shock-protecting end caps. Frame dimension : 1" x 2 1/4"

**Applications :** A mid-range do-it-yourself level for general around-the-house projects. Hands-free leveling on ferrous materials.

Catalog Number	Length	Total Vial Count	Level Vial Count	Plumb Vial Count
1724	24"	3	1	2
1748	48"	3	1	2
1772	72"	4	2	2

## ระดับน้ำอลูมิเนียม

### STANDARD ALUMINUM LEVELS



STANDARD SERIES

**Construction :** Inexpensive, lightweight, aluminum extruded I-beam frame. V-groove edge to accommodate round surfaces. 360 degree reading acrylic yellow barrel vials One-piece Quick-Change® replaceable high impact plastic cover. (no lenses). Frame dimension : 7/8" x 2 1/8"

**Applications:** An inexpensive, lightweight level for any cuntry levelé project around-the-house.

Catalog Number	Length	Total Vial Count	Level Vial Count	Plumb Vial Count	45° Vial Level
122	12"	2	1	1	-
182*	18"	2	1	1	-
183	18"	3	1	1	1
242*	24"	2	1	1	-
243	24"	3	1	1	1
363	36"	3	1	1	1
483	48"	3	1	1	1

\* ยกเลิกการผลิต DISCONTINUED ITEM

## ระดับน้ำพลาสติกมีสเกลนิ้ว-มิล

### STANDARD STRUCTO-CAST® LEVELS WITH RULE



7700 SERIES

**Construction :** One-piece, injection molded structural-foam plastic frame. Rule edge in 1/8 ths, 1/16 this and mm. 360 degree reading acrylic yellow barrel vials.

One-piece Quick-Change® replaceable high impact plastic vial cover (no lenses). Frame dimension : 14" - 24" ; 1" x 2 1/4" ; 36" - 48" ; 1 1/4" x 2 1/4"

**Applications:** A lightweight, Inexpensive, non-marring level for around-the-house projects.

Catalog Number	Catalog Number	Length	Total Vial Count	Level Vial Count	Plumb Vial Count	45° Vial Count	Graduations	Color
7714-L	7714-Y*	14"	2	1	1	-	1/8", 1/16", mm.	Glo-Yellow
7718-L	7718-Y*	18"	3	1	1	1	1/8", 1/16", mm.	Glo-Yellow
7724-L	7724-Y*	24"	3	1	1	1	1/8", 1/16", mm.	Glo-Yellow
7736-L	-	36"	3	1	1	1	1/8", 1/16", mm.	Glo-Lime
7748-L	7748-Y*	48"	3	1	1	1	1/8", 1/16", mm.	Glo-Yellow

\* ยกเลิกการผลิต DISCONTINUED ITEM

# LEVELS

ระดับน้ำอลูมิเนียมฐานเรียบหนึ่งด้าน-ฐานสามเหลี่ยมหนึ่งด้านสเกลมิล  
**ALUMINUM RULE LEVEL™**



2600 SERIES

**Construction :** Bright red anodized triangular shaped aluminum frame. Convenient screen-printed rule edge in mm. 360 degree reading acrylic yellow barrel vials. One-piece Quick-Change replaceable high impact plastic vial covers (no lenses). Frame dimension : 1"-2<sup>13</sup>/<sub>16</sub>"

**Applications :** Measure, layout, and level : all with one tool. Perfect for wallpapering, or hanging pictures and shelving.

Catalog Number	Length	Total Vial Count	Level Vial Count	Plumb Vial Count	Graduations
2624*	24"	3	1	2	mm.
2636*	36"	3	1	2	mm.
2648*	48"	3	1	2	mm.

\* ยกเลิกการผลิต DISCONTINUED ITEM

ระดับน้ำพลาสติก

**STANDARD STRUCTO-CAST® TORPEDO LEVELS**



**Construction :** Durable high impact plastic molded frame and covers. 360 degree reading acrylic yellow barrel vials. Level vial is top-reading. V-grooved edge.

New Code No.	Catalog Number	Length	Level Vial Count	Plumb Vial Count	45° Vial Count
7500-Orange	7500*	9"	1	1	1

\* ยกเลิกการผลิต DISCONTINUED ITEM

ระดับน้ำพลาสติกฐานแม่เหล็ก

**MAGNETIC STRUCTO-CAST® TORPEDO LEVELS**



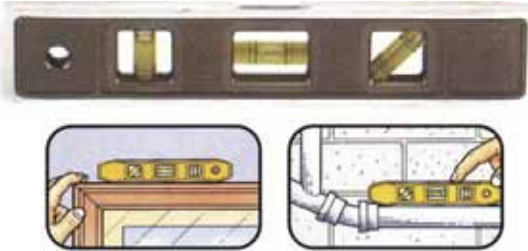
**Construction :** Durable high impact plastic molded frame and covers. 360 degree reading acrylic yellow barrel vials. Level vial is top-reading. V-grooved edge. Full-length magnetic edge

Catalog Number	Length	Level Vial Count	Plumb Vial Count	45° Vial Count
7500M	9"	1	1	1

# TORPEDO LEVELS

ระดับน้ำอลูมิเนียม

## ALUMINUM TORPEDO LEVELS



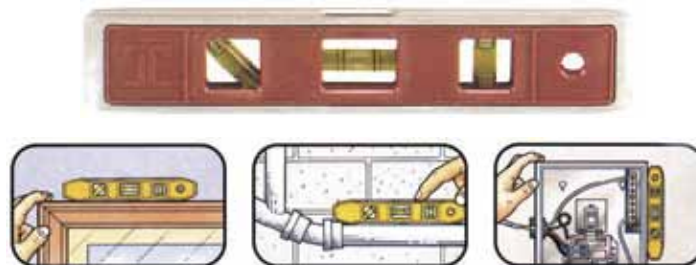
**Construction :** One-piece, full-length cast aluminium frame with exclusive CNC machined edges. 360 degree reading acrylic yellow barrel vials. High impact plastic covers. Large v-grooved edge to accommodate pipe and conduit. Level vial is top-reading

Catalog Number	Length	Level Vial Count	Plumb Vial Count	45° Vial Count
4500*	9"	1	1	1

\* ยกเลิกการผลิต DISCONTINUED ITEM

ระดับน้ำอลูมิเนียมฐานแม่เหล็ก

## MAGNETIC ALUMINUM TORPEDO LEVELS

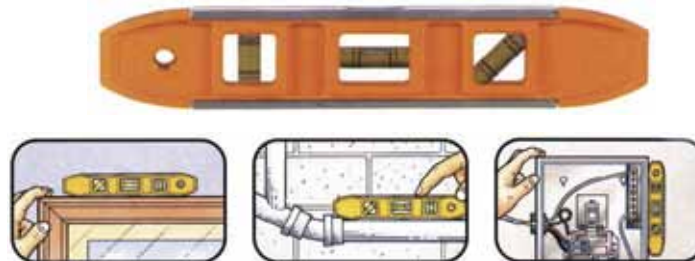


**Construction :** One-piece, full-length cast aluminium frame with exclusive CNC machined edges. 360 degree reading acrylic yellow barrel vials. High impact plastic covers. Large v-grooved edge to accommodate pipe and conduit. Level vial is top-reading. Extra strong full-length magnetic edge.

Catalog Number	Length	Level Vial Count	Plumb Vial Count	45° Vial Count
4500M	9"	1	1	1

ระดับน้ำอลูมิเนียมฐานแม่เหล็ก

## MAGNETIC ALUMINUM TORPEDO LEVELS



**Construction :** Extrude aluminium frame with high impact plastic covers. 360 degree reading acrylic yellow barrel vials. Level vial is top-reading. V-grooved edge. Full-length magnetic edge.

Catalog Number	Length	Level Vial Count	Plumb Vial Count	45° Vial Count
8500M	9"	1	1	1

# LINE & SURFACE LEVELS

## ALUMINUM LINE LEVEL



**Construction :** Hexagonal aluminum extruded body. Durable high impact plastic reversed line hooks. Acrylic yellow barrel vial.

Catalog Number	Length	Total Vial Count
555	3"	1



## STRUCTO-CAST® LINE LEVEL



**Construction :** Lightweight, durable high impact plastic ends. 360 degree reading acrylic yellow barrel vial. Reversed line hooks. Convenient pocket clip.

Catalog Number	Length	Total Vial Count	Color
575	3"	1	Black



## CROSS CHECK LEVEL



**Construction :** High impact plastic body. Two acrylic yellow barrel vials. Mounting holes.

Catalog Number	Length	Total Vial Count
125	2 1/4"	2



## BULL'S-EYE™ LEVEL



**Construction :** Acrylic plastic body. Mounting holes.

Catalog Number	Diameter	Total Vial Count
100	1 3/4"	1



# SPECIALTY LEVELS

## POCKET LEVEL WITH MAGNETIC PICK-UP



**Construction :** High impact plastic body with metal pocket clip. Acrylic yellow barrel vial. Strong magnetic pick-up. V-groove edge.

Catalog Number	Length	Total Vial Count
500	5"	1



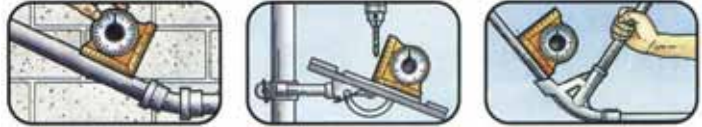
# SPECIALTY LEVELS

## MAGNETIC ANGLE LOCATOR



Catalog Number	Diameter
700	5 7/8"

**Construction :** High impact plastic body in hi-visibility orange. Clear acrylic lens with easy-to-read increments in 0-90 degrees in four quadrants. V-grooved edge. Extra strong permanent ceramic magnet. Convenient metric rule on one edge, and English rule on the other.

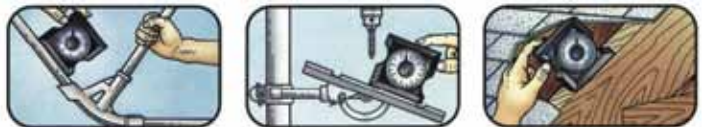


## PITCH & SLOPE LOCATOR



**Construction :** High impact plastic body in black. Clear acrylic lens with easy-to-read graduation. Half of scale is printed in 0-90 degrees in two quadrants. Other half is a patented printed scale to read pitch in inch rise per 12" run without the use of conversion tables.

Catalog Number	Diameter
750	5 3/8"



## POST LEVELS



**Construction :** Durable high impact plastic body. Acrylic yellow barrel vials with patented white reflective backer plates enables vials to be easily read. Strap permanently affixed to one end to eliminate loss. Quickly and easily hooks to any post, pole or stringer. Magnetic version available.

Catalog Number	Size	Total Vial Count
175	5 1/2" x 3 1/2"	3
175M*	5 1/2" x 3 1/2"	3

\*M" designated magnetic version

\*ยกเลิกการผลิต



# CARPENTER & RAFTER SQUARES

## ฉากอลูมิเนียม

### ALUMINUM CARPENTER SQUARE

**Construction :** Permanent 1/8" stamped graduations. Clear (Silver) anodized finish.



Catalog Number	Size	Material	Graduations
CS4	16" x 24"	Aluminum	1/8"

## BRASS STAIR / SQUARE GAUGES



**Construction :** Machined solid brass with knurled screws.

Catalog Number	Pack
405	2Pcs./card





# COMBINATION SQUARES

## ฉากผสม

### METAL COMBINATION SQUARES



**Construction :** Cast zinc head with computer machined gauging edges for greater accuracy. Acrylic yellow barrel vial. Hardened removable scribe. Steel blades are permanently stamped in 1/8 ths, 1/16 ths, and 1/32 nds with rust protective coating. Also available in metric (1/8 ths, 1/16 ths, 1/32 nds and mm). 420EM blade is stamped in 1/8é and mm

Catalog Number	Size	Head Material	Graduations
400EM	12"	Zinc	1/8", 1/16", 1/32", mm
420EM	16"	Zinc	1/8", mm



## ฉากผสม

### METAL COMBINATION SQUARES



**Construction :** Cast iron head, Acrylic yellow barrel vial. Hardened removable scribe. Steel blades are permanently stamped in 1/8 ths, 1/16 ths, and 1/32 nds with rust protective coating. Also available in metric (1/8 ths, 1/16 ths, 1/32 nds and mm).

Catalog Number	Size	Head Material	Graduations
440EM*	12"	Cast Iron	1/8", 1/16", 1/32", mm

\* ยกเลิกการผลิต DISCONTINUED ITEM



## ฉากผสม

### STRUCTO-CAST COMBINATION SQUARES



**Construction :** High impact plastic head. Acrylic yellow barrel vial. Stamped Steel blades in 1/8 ths, 1/16 ths, and 1/32 nds with rust protective coating. Also available in metric (1/8 ths, 1/16 ths, 1/32 nds and mm).

Catalog Number	Size	Head Material	Graduations
415EM	12"	Plastic	1/8", 1/16", 1/32", mm

## ฉากช่างไม้

### STRUCTO-CAST TRY & MITRE SQUARES



**Construction :** High impact plastic handle with hand grip and insert-molded blade. Stainless steel Blade with permanent stamped graduations in 1/8 ths. Metric version available in 1/8" and mm graduations .

Catalog Number	Size	Graduations
451	8"	1/8", mm



# PLUMB BOBS & SAWS



## ลูกดิ่งทองเหลือง

### BRASS PLUMB BOBS

**Construction** : Machined brass with lacquer finish. Replaceable hardened steel tip. Removable cap for easy, centered string installation.

Catalog Number	Weight
108	8 oz. (230g)
112	12 oz. (340g)
116	16 oz. (450g)
124	24 oz. (680g)
132	32 oz. (900g)



## ลูกดิ่งเหล็ก

### STEEL PLUMB BOBS

**Construction** : Machined hexagonal steel with bright plated finish. Removable top for easy, centered string installation.

Catalog Number	Weight
03*	3 oz. (80g)
05	5 oz. (140g)
08	8 oz. (230g)
012	12 oz. (340g)
016*	16 oz. (450g)



\* ยกเลิกการผลิต DISCONTINUED ITEM

## เลื่อยหางหนู

### WALL BOARD SAW

**Construction** : Hardwood handle with lacquer finish. Steel blade with sharp teeth and rust protective finish.

Catalog Number	Size
68	11.1/4" overall



## ผงหมึกบักเต้าตีเส้น

### MARKING CHALK

Catalog Number	Size	Color
3208-B*	8 oz.	BLUE
3208-O*	8 oz.	GLO-ORANGE
3208-W*	8 oz.	WHITE
3208-Y*	8 oz.	YELLOW

\* ยกเลิกการผลิต DISCONTINUED ITEM

